



Houston Forensic Science Center

Comparative and Analytical Division - Toxicology

Headspace GC Maintenance Log

Instrument: Headspace 3

Date	N ₂ Tank Pressure	H ₂ Pressure		Air Tank Pressure	He Tank Pressure	Air Control	SS	Comments	Initials
		H ₂ Water Level	Pass/Fail			Pass/Fail			
12/14/21	70 500	70 yes	70 1800	70 400	Pass	Pass		JR	
12/15/2021	70 500	70 yes	70 1600	70 1950	pass	pass	Changed He tank	HAM	
12/16/21	70 500	70 yes	70 1450	70 1900	pass	Pass		BAM	
								BAM 12/20/21	

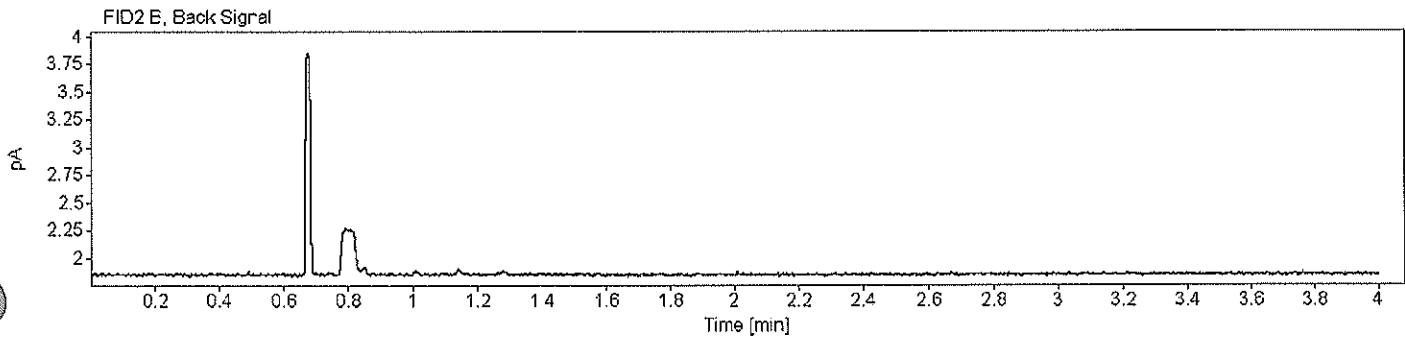
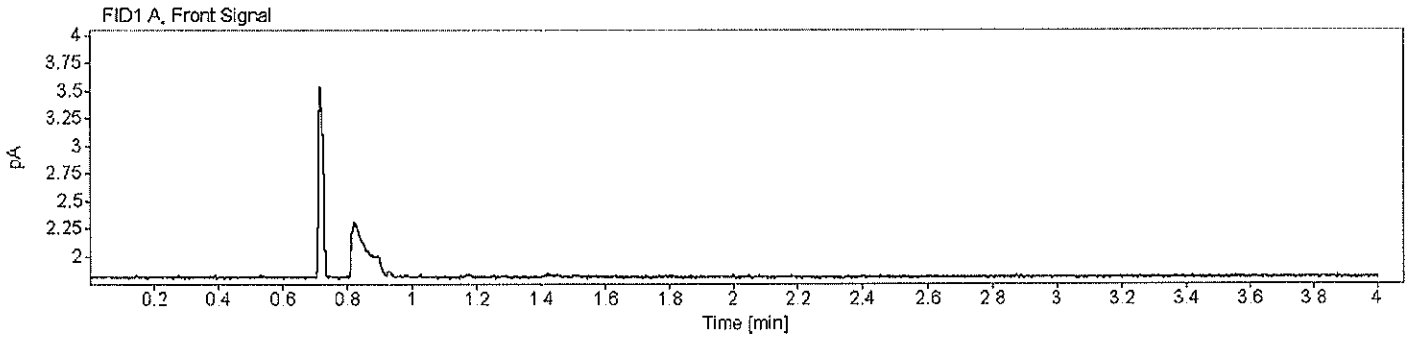
Signature: Brooke Mendenhall

Date Completed: 12/20/21

Houston Forensic Science Center, Inc.
Comparative and Analytical Division - Toxicology
Volatiles Analysis Chromatograms



Sample Name: Air Control Description: Vial Number: 1
Instrument: Headspace 3 Acq. Method: ALC.M Injection Date: 12/14/2021 8:24:37 AM
Data file: C:\Chem32\11\Data\ALC_2021-214_TEST 2021-12-14 08-15-36\001F0101.D

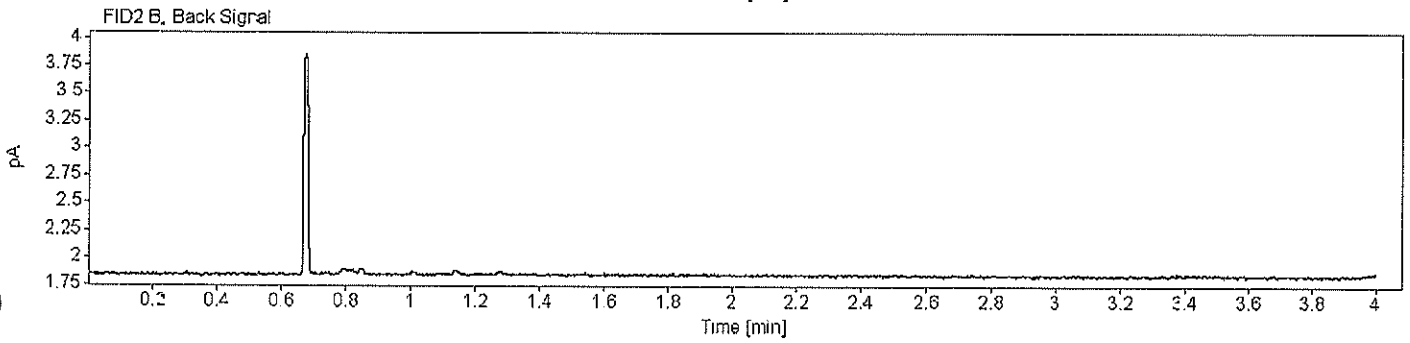
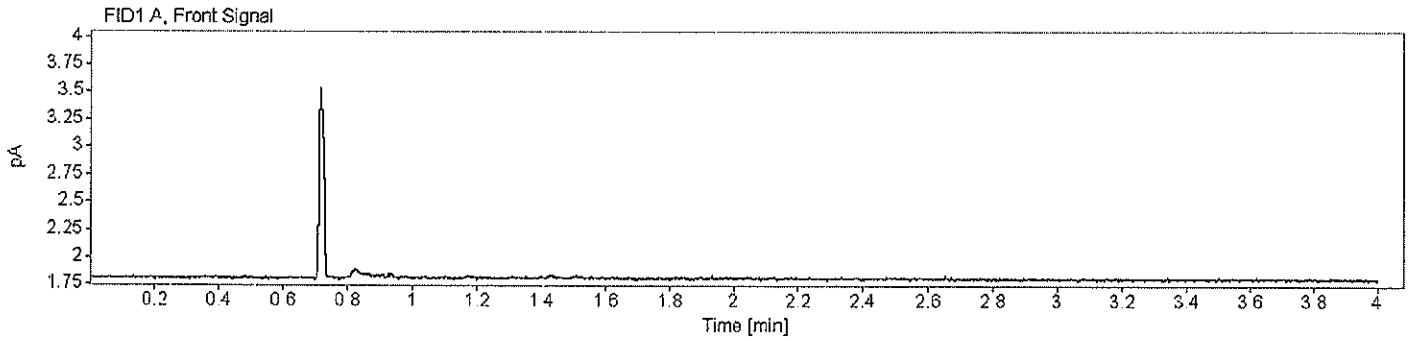


JR

Houston Forensic Science Center, Inc.
Comparative and Analytical Division - Toxicology
Volatiles Analysis Chromatograms



Sample Name: Air Control Description: Vial Number: 2
Instrument: Headspace 3 Acq. Method: ALC.M Injection Date: 12/14/2021 8:29:07 AM
Data file: C:\Chem32\1\Data\ALC_20211214_TEST 2021-12-14 08-15-36\002F0201.D

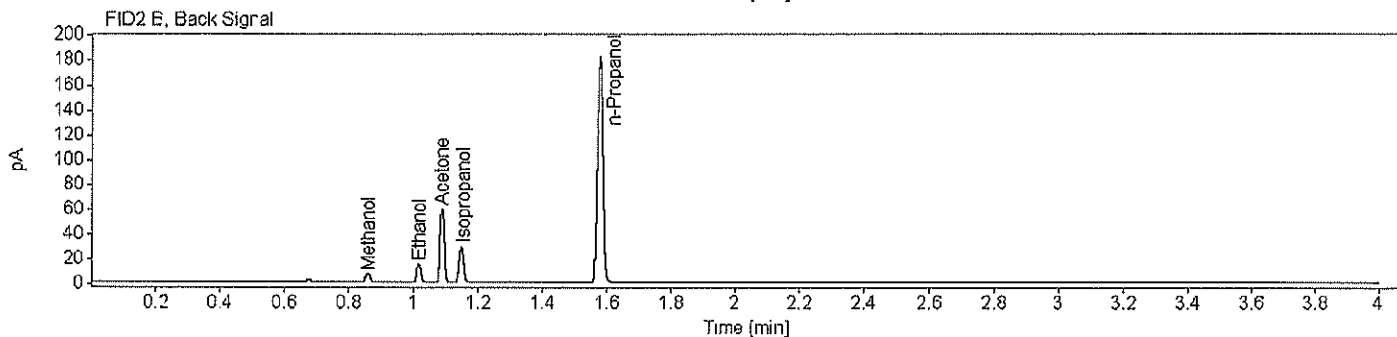
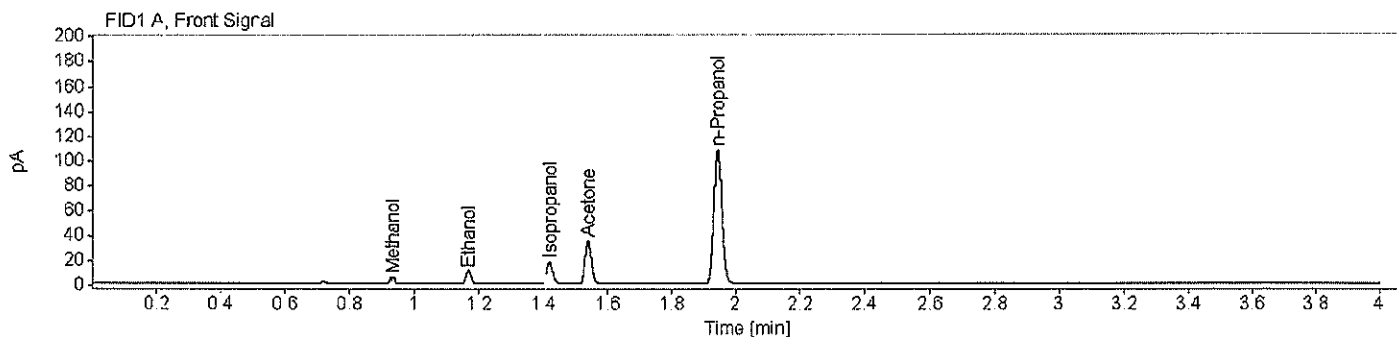


JR

Houston Forensic Science Center, Inc.
Comparative and Analytical Division - Toxicology
Volatiles Analysis Chromatograms



Sample Name: SS Description: Lot: FN02242010 Vial Number: 3
 Instrument: Headspace 3 Acq. Method: ALC.M Injection Date: 12/14/2021 8:34:59 AM
 Data file: C:\Chem32\1\Data\ALC_20211214_TEST 2021-12-14 08-15-36\003F0301.D



Name FID1A

Compound	Peak Symmetry	Peak to Valley Ratio	RT [min]	Expected RT [min]	Area	Concentration [g/100 mL]
Methanol	1.02548		0.933	0.933	6.1257	0.0117
Ethanol	0.85594		1.168	1.167	12.4012	0.0119
Isopropanol	0.85739		1.419	1.419	24.0795	0.0104
Acetone	0.86147		1.539	1.539	48.1430	0.0111
n-Propanol	0.88627		1.943	1.943	187.5756	0.0100

Name FID2B

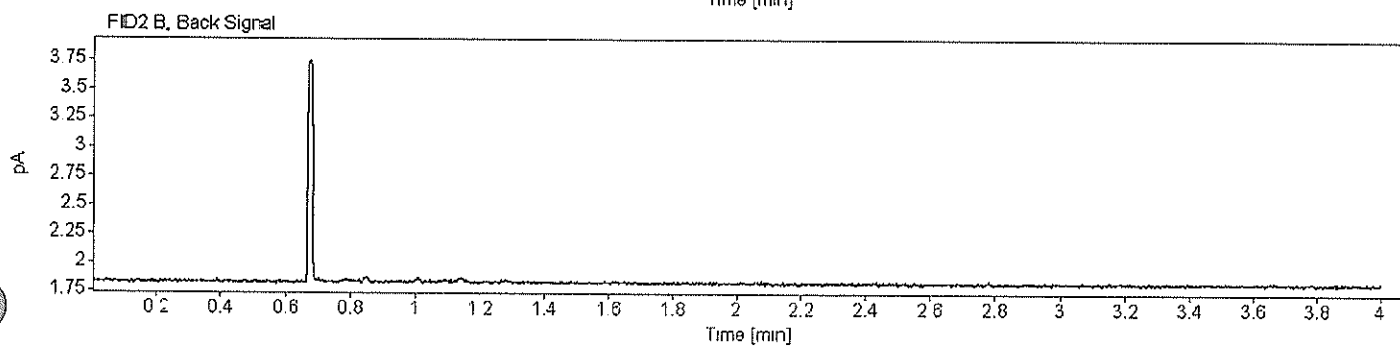
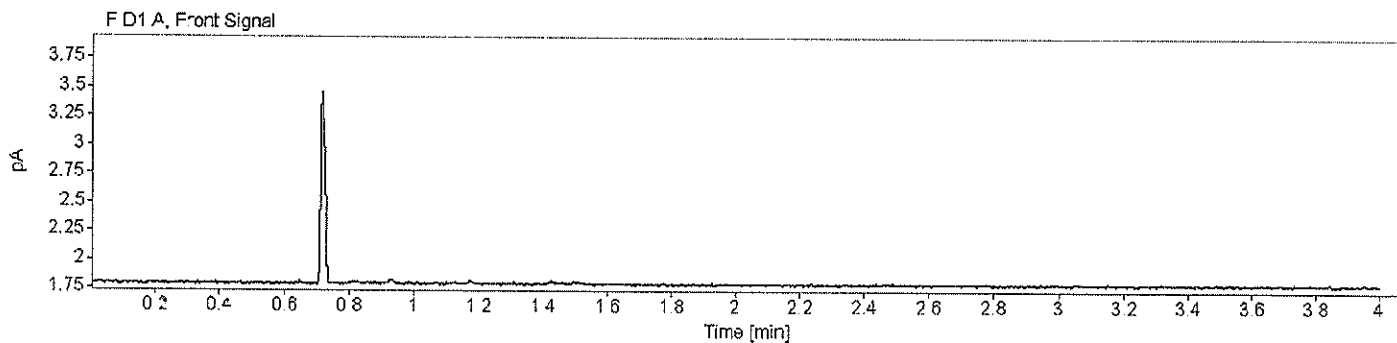
Compound	Peak Symmetry	Peak to Valley Ratio	RT [min]	Expected RT [min]	Area	Concentration [g/100 mL]
Methanol	1.48440		0.862	0.862	7.2442	0.0121
Ethanol	0.95706		1.018	1.019	14.0561	0.0118
Acetone	0.91780	1111.43666767598	1.089	1.090	54.3115	0.0110
Isopropanol	0.90970	535.628614139403	1.149	1.151	27.2941	0.0104
n-Propanol	0.95409		1.579	1.582	211.8651	0.0100

JR

Houston Forensic Science Center, Inc.
Comparative and Analytical Division - Toxicology
Volatiles Analysis Chromatograms



Sample Name: Air Control Description: Vial Number: 1
Instrument: Headspace 3 Acq. Method: ALC.M Injection Date: 12/15/2021 9:03:40 AM
Data file: C:\Chem32\1\Data\ALC_20211215_TEST 2021-12-15 08-54-19\001F0101.D

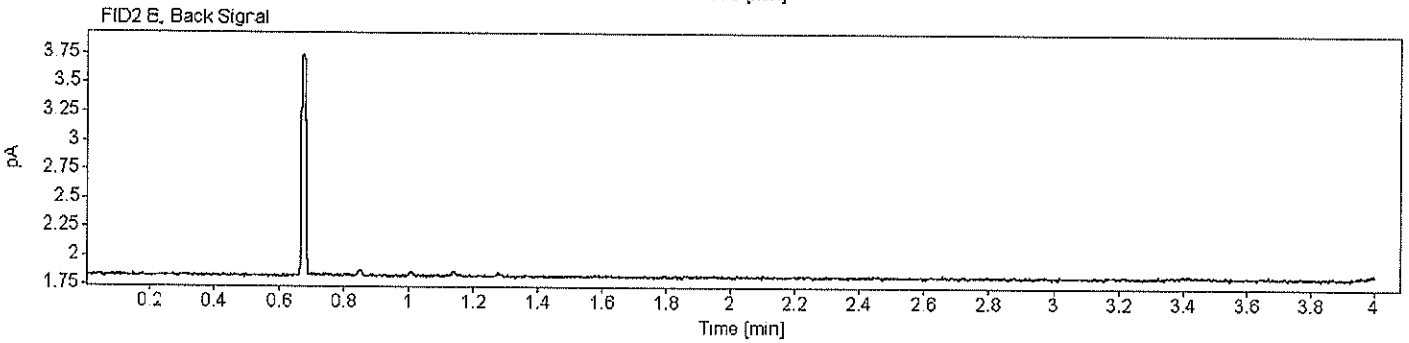
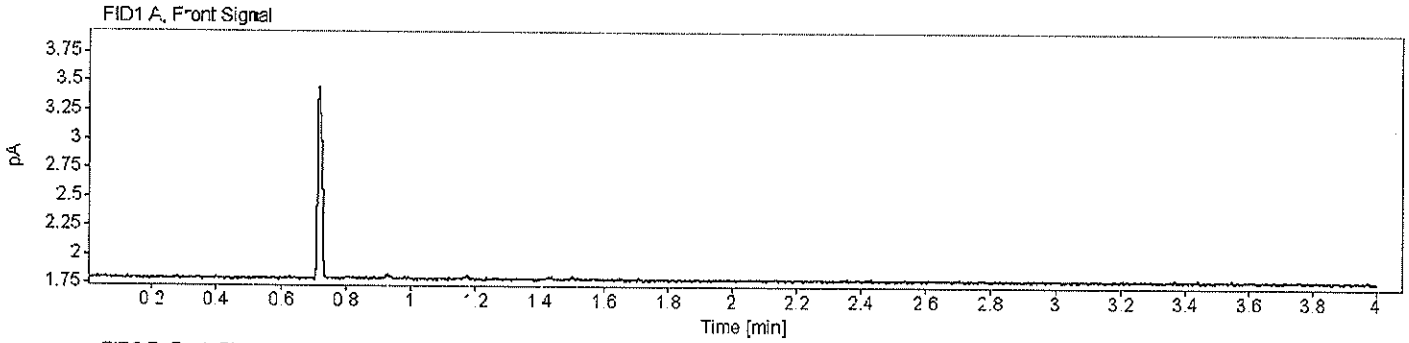


HM

Houston Forensic Science Center, Inc.
Comparative and Analytical Division - Toxicology
Volatiles Analysis Chromatograms



Sample Name: Air Control Description: Vial Number: 2
Instrument: Headspace 3 Acq. Method: ALC.M Injection Date: 12/15/2021 9:08:10 AM
Data file: C:\Chem3211\Data\ALC_20211215_TEST 2021-12-15 08-54-19\002F0201.D

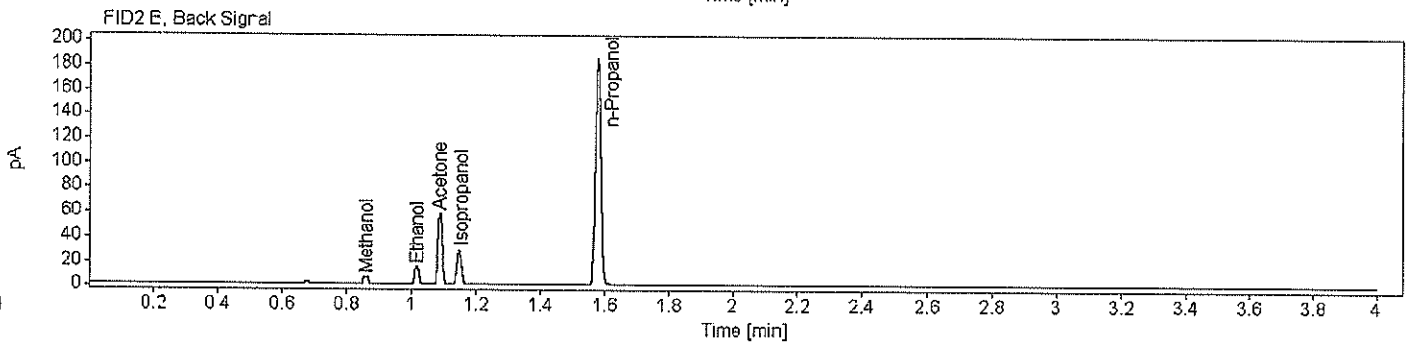
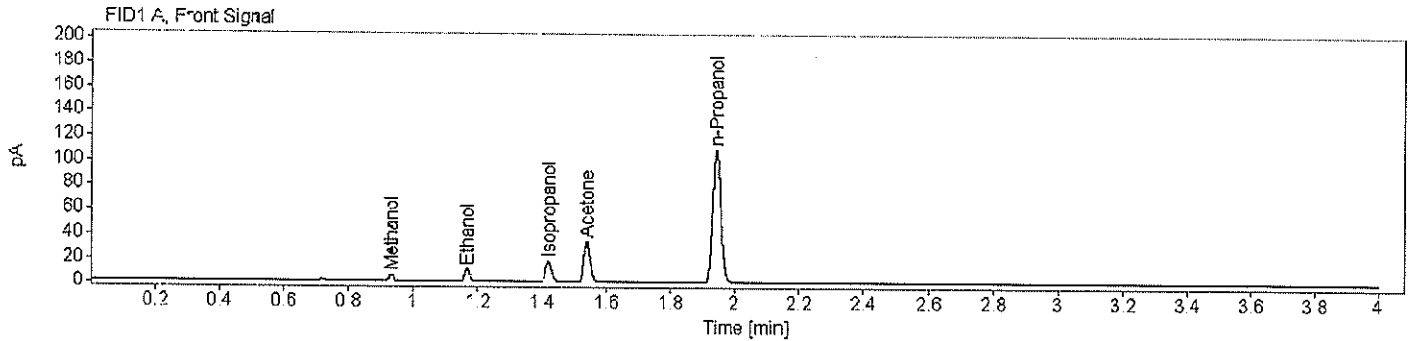


HM

Houston Forensic Science Center, Inc.
Comparative and Analytical Division - Toxicology
Volatiles Analysis Chromatograms



Sample Name: SS Description: Lot: FN02242010 Vial Number: 3
 Instrument: Headspace 3 Acq. Method: ALC.M Injection Date: 12/15/2021 9:14:03 AM
 Data file: C:\Chem32\1\Data\ALC_20211215_TEST 2021-12-15 08-54-19\003F0301.D



Name FID1A

Compound	Peak Symmetry	Peak to Valley Ratio	RT [min]	Expected RT [min]	Area	Concentration [g/100 mL]
Methanol	1.04492		0.933	0.933	6.1058	0.0115
Ethanol	0.84894		1.168	1.167	12.2515	0.0116
Isopropanol	0.85272		1.420	1.419	23.6822	0.0100
Acetone	0.86610		1.540	1.539	47.2288	0.0106
n-Propanol	0.87934		1.943	1.943	191.3766	0.0100

Name FID2B

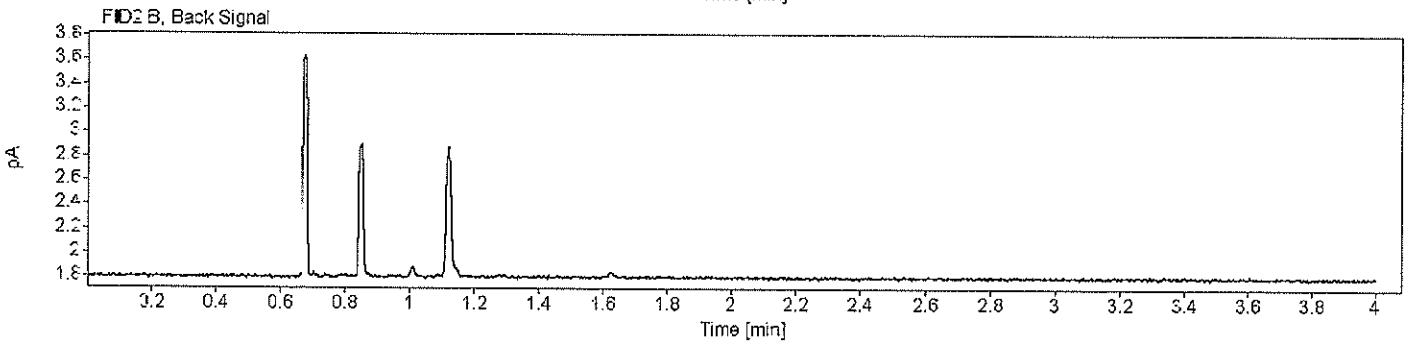
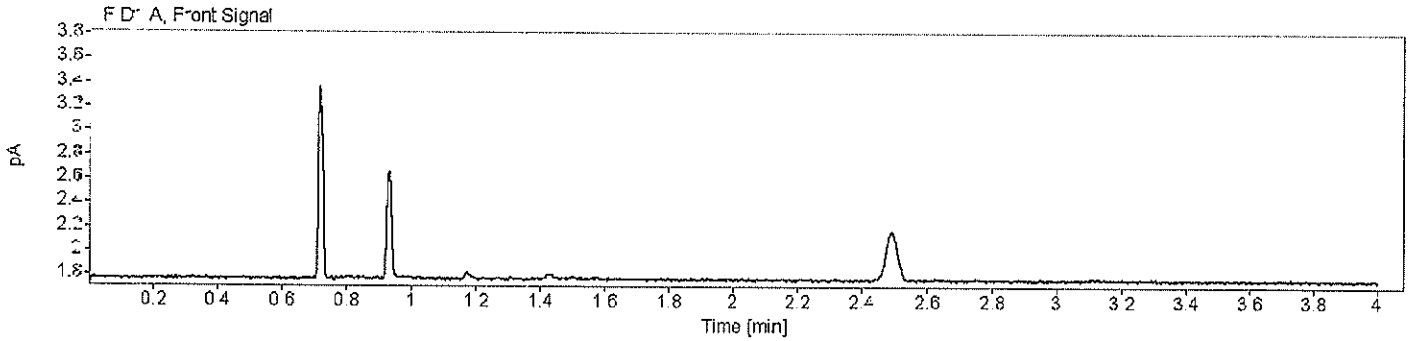
Compound	Peak Symmetry	Peak to Valley Ratio	RT [min]	Expected RT [min]	Area	Concentration [g/100 mL]
Methanol	1.41056		0.862	0.862	6.8973	0.0113
Ethanol	0.94689		1.018	1.019	13.8891	0.0114
Acetone	0.91731		1.089	1.090	53.2370	0.0106
Isopropanol	0.90175		1.149	1.151	26.7869	0.0099
n-Propanol	0.94585		1.579	1.582	216.2590	0.0100

HM

Houston Forensic Science Center, Inc.
Comparative and Analytical Division - Toxicology
Volatiles Analysis Chromatograms



Sample Name: Air Control Description: Vial Number: 1
Instrument: Headspace 3 Acq. Method: ALC.M Injection Date: 12/16/2021 11:05:55 AM
Data file: C:\Chem32\1\Data\ALC_202112-6_TEST 2021-12-16 10-56-54\001F0101.D

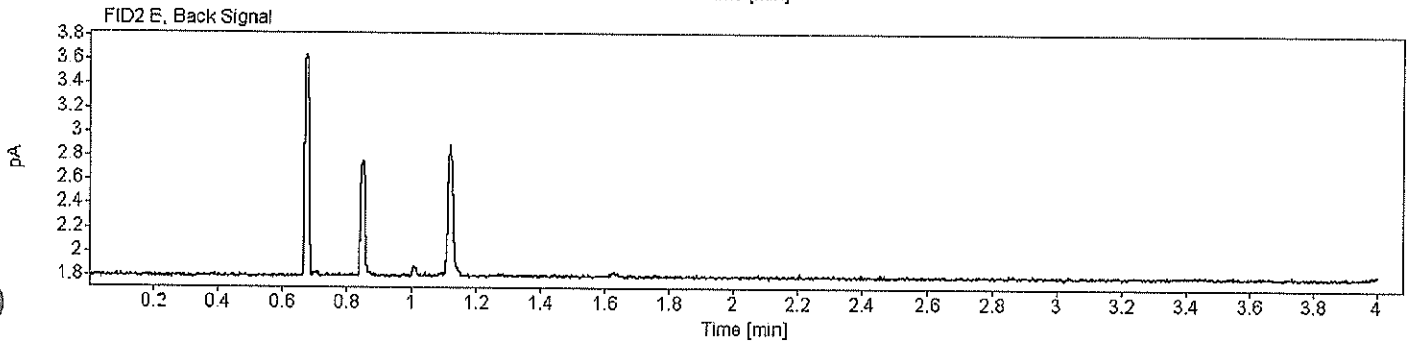
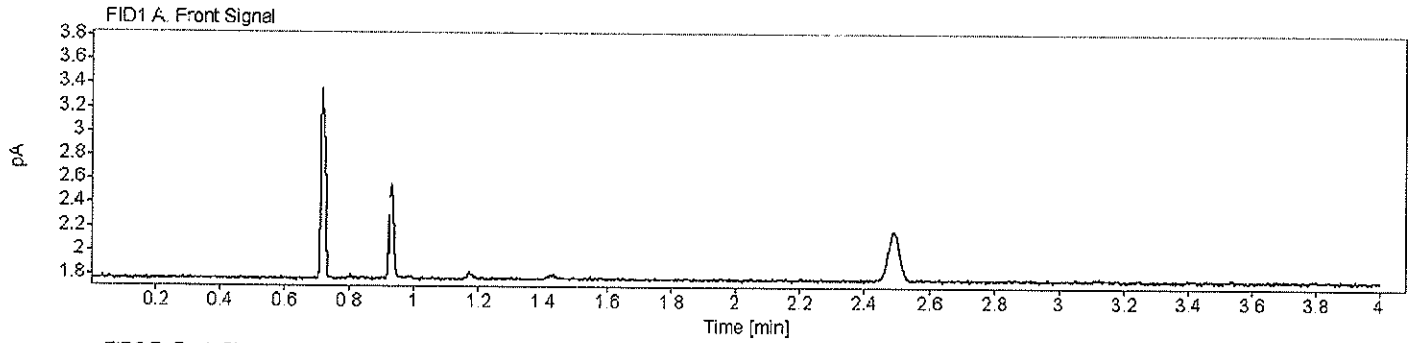


BAM

Houston Forensic Science Center, Inc.
Comparative and Analytical Division - Toxicology
Volatiles Analysis Chromatograms



Sample Name: Air Control Description: Vial Number: 2
Instrument: Headspace 3 Acq. Method: ALC.M Injection Date: 12/16/2021 11:10:26 AM
Data file: C:\Chem32\1\Data\ALC_20211216_TEST 2021-12-16 10-56-54\002F0201.D

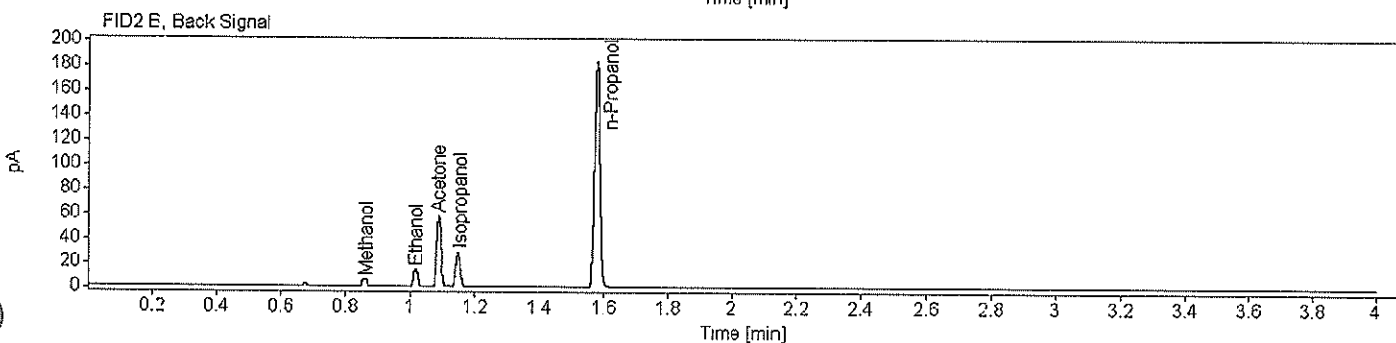
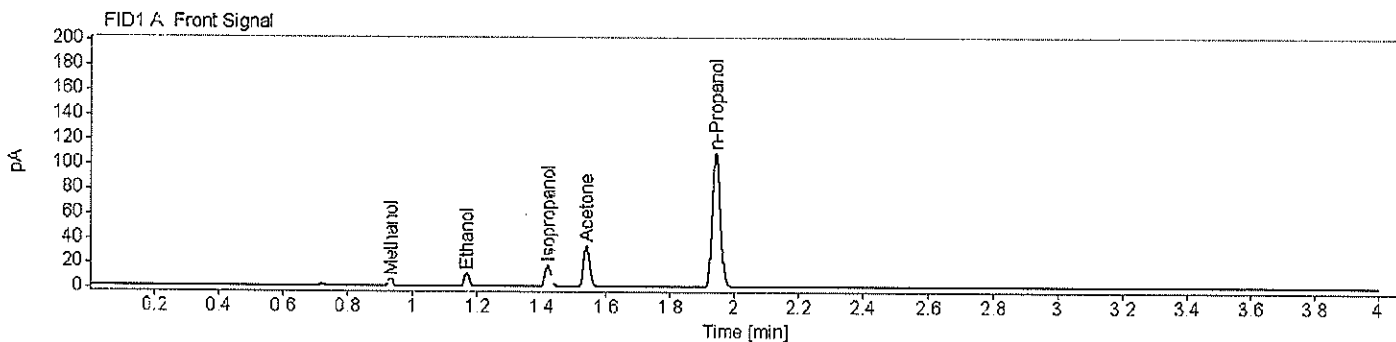


BAM

Houston Forensic Science Center, Inc.
 Comparative and Analytical Division - Toxicology
 Volatiles Analysis Chromatograms



Sample Name: SS Description: Lot: FN02242010 Vial Number: 3
 Instrument: Headspace 3 Acq. Method: ALC.M Injection Date: 12/16/2021 11:16:18 AM
 Data file: C:\Chem32\1\Data\ALC_20211216_TEST 2021-12-16 10-56-54\003F0301.D



Name FID1A

Compound	Peak Symmetry	Peak to Valley Ratio	RT [min]	Expected RT [min]	Area	Concentration [g/100 mL]
Methanol	1.08534		0.933	0.933	6.0804	0.0115
Ethanol	0.85373		1.168	1.167	12.1386	0.0116
Isopropanol	0.84747		1.419	1.419	23.3612	0.0100
Acetone	0.86027		1.539	1.539	46.1578	0.0105
n-Propanol	0.87645		1.943	1.943	189.5070	0.0100

Name FID2B

Compound	Peak Symmetry	Peak to Valley Ratio	RT [min]	Expected RT [min]	Area	Concentration [g/100 mL]
Methanol	1.52415		0.862	0.862	6.8545	0.0113
Ethanol	0.94670		1.018	1.019	13.7535	0.0114
Acetone	0.88804	190.564341804682	1.089	1.090	52.9235	0.0106
Isopropanol	0.89934	92.6879027976075	1.148	1.151	26.5880	0.0100
n-Propanol	0.94363		1.579	1.582	214.0999	0.0100

BAM