



Houston Forensic Science Center

Comparative and Analytical Division - Toxicology

GC/MS Maintenance Log

Instrument: GCMS-5

Date	He Tank Pressure	Air Tank Pressure*	H ₂ Water Level*	Auto Tune	Septum Change	Wash Vials Filled	Syringe Washed	Rough Pump Oil Level Checked	Liner Change	Gold Seal Replaced	Column Cut	Output*	Comments	Analyst
			H ₂ Pressure*									Bead Voltage*		
12/16/2020	50 900	70 1300	yes 80	✓	✓	✓	✓	✓	X	X	X	18.1 0.910		mh
12/23/2020 mh														

*For GC/MS-NPD instrument (GCMS-5).

Signature: Melink Henry

Date Completed: 12/23/2020

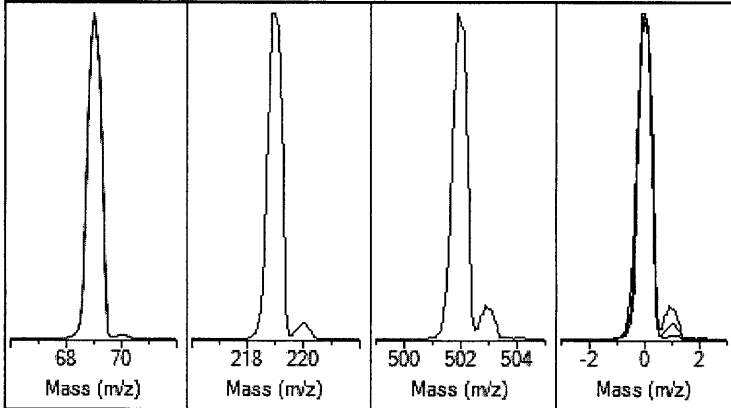
Extraction Source Autotune - 5977

Tune timestamp: 12/16/2020 2:42 PM (UTC-06:00)

GCMS_5 DRS Acquisition

D:\MASSHUNTER\GCMS\1\5977\etune.u

US1609M002

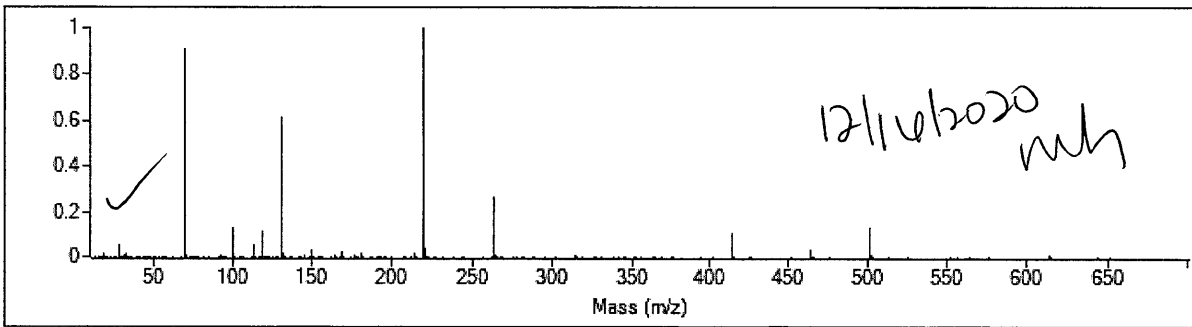


Ion Polarity	Pos	PFTBA	Open
Emission	34.6	Mass Gain	148
Electron Energy	70.0	Mass Offset	-23
Filament	1	Amu Gain	2646
Repeller	4.98	Amu Offset	135.31
Ion Focus	89.8	Width219	-0.048
Entrance Lens	17.6	DC Polarity	Neg
Ent Lens Offset	13.40	HED Enable	On
Ion Body	5.25	EM Volts	1304.9
Post Extractor 1	0	Extractor Lens	0.00
Post Extractor 2	0	Scan Speed	3
JetClean Flow Actual/[Setpoint]	0.00 [0.00]	Averages	3

Actual m/z	Abund	Rel Abund	Pw50
69.00	428,234	100.0%	0.61
219.00	448,332	104.7%	0.61
501.90	60,566	14.1%	0.60

Temperatures and Pressures		
MS Source	230 Turbo Speed	100.0
MS Quad	150 Hi Vac	N/C

Low	High	Step	Speed	Threshold	Peaks	Base	Abundance	Total Ion
10.00	701.00	0.10	3	100	196	219.00	449,152	1,742,987



Target m/z	Actual m/z	Abund	Rel Abund	Iso m/z	Iso Abund	Iso Ratio
69.00	69.00	409,088	100.0%	70.10	4,311	1.1%
219.00	219.00	449,152	109.8%	220.00	19,784	4.4%
502.00	502.00	58,328	14.3%	503.00	6,376	10.9%

Air/Water Check: H2O ~1.9% N2 ~6.1% O2 ~1.4% CO2 ~0.3% N2/H2O ~326.7%

Column(1) Flow: 3.21 Column(2): 0.00 ml/min Interface Temp: 300

Ramp Criteria:

Ion Focus maximum 90 volts using ion 502; Electron Multiplier Gain 342413.908

Repeller maximum 35 volts using ion 219; Gain Factor 3.4241

Mass Gain Values(Scan Speed): 154(3) 159(2) 173(1) 192(0) 252(FS1) 252(FS2) 241(FS3)

TARGET MASS:	50	69	131	219	414	502	1050
Amu Offset		135.3	135.3	135.3	135.3	135.3	135.3
Entrance Lens Offset		13.4	13.4	13.4	13.4	13.4	13.4