



Houston Forensic Science Center

Comparative and Analytical Division - Toxicology

GC-MS Maintenance Log

Instrument: GCMS-3

Date	He Tank Pressure	Air Tank Pressure*	H ₂ Water Level* H ₂ Pressure*	Auto Tune	Septum Change	Wash Vials Filled	Syringe Washed	Rough Pump Oil Level Checked	Liner Change	Gold Seal Replaced	Column Cut	Computer Restarted	Output* Bead Voltage*	Comments	Analyst
12/30/2020	65 1300	n/a	n/a	✓	X	✓	✓	✓	X	X	X	X	n/a		mhr
12/31/2020 mhr															
12/31/2020 mhr															
12/31/2020 mhr															
12/31/2020 mhr															

*For GC-MS/NPD instrument (GCMS-5).

Signature: Melina Henry

Date Completed: 12/31/2020

LAB-24

Issued By: Manager - Toxicology

Issue date: 2020-12-28 12/31/2020 mhr

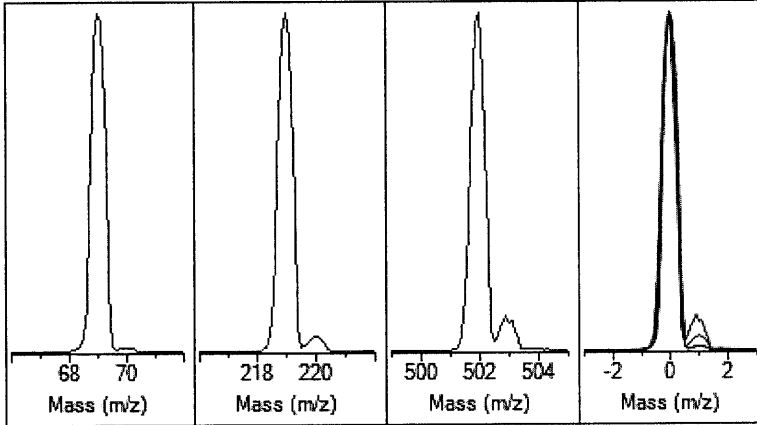
Autotune - 5975

Tune timestamp: 12/30/2020 11:12 AM (UTC-06:00)

GCMS-3

D:\MASSHUNTER\GCMS\1\5975\ATUNE.U

US92013456

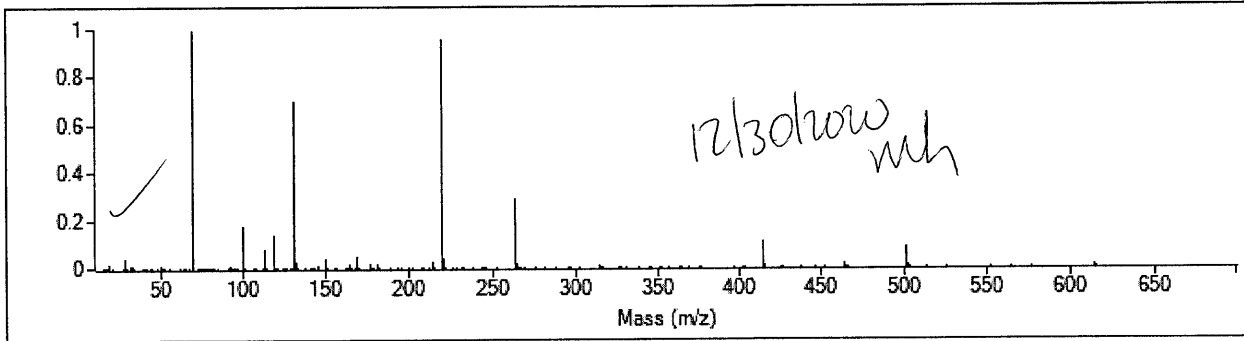


Ion Polarity	Pos	PFTBA	Open
Emission	34.6	Mass Gain	-841
Electron Energy	70.3	Mass Offset	-36
Filament	1	Amu Gain	1578
Repeller	20.32	Amu Offset	117.75
Ion Focus	90.2	Width219	-0.025
Entrance Lens	28.5	DC Polarity	Pos
Ent Lens Offset	17.57	HED Enable	On
		EM Volts	1506
		Scan Speed	3
JetClean Flow Actual/[Setpoint]	0.00 [0.00]	Averages	3

Actual m/z	Abund	Rel Abund	Pw50
69.00	468,865	100.0%	0.60
219.00	451,581	96.3%	0.60
502.00	41,675	8.9%	0.58

Temperatures and Pressures		
MS Source	230 Foreline	121.795
MS Quad	150 Hi Vac	Off

Low	High	Step	Speed	Threshold	Peaks	Base	Abundance	Total Ion
10.00	701.00	0.10	3	100	163	69.00	441,664	1,810,548



Target m/z	Actual m/z	Abund	Rel Abund	Iso m/z	Iso Abund	Iso Ratio
69.00	69.00	441,664 ✓	100.0% ✓	70.00	5,269	1.2% ✓
219.00	219.00	423,360 ✓	95.9% ✓	220.00	17,552	4.1% ✓
502.00	502.00 ✓	37,816 ✓	8.6% ✓	503.00	3,780	10.0% ✓

Air/Water Check: H2O ~1.5% N2 ~4.1% O2 ~0.7% CO2 ~0.1% N2/H2O ~277.0%
 Column(1) Flow: 3.00 Column(2): 0.00 ml/min Interface Temp: 280

Ramp Criteria:

Ion Focus maximum 90 volts using ion 502; Electron Multiplier Gain 192378.258
 Repeller maximum 35 volts using ion 219; Gain Factor 1.9238

Mass Gain Values(Scan Speed): -830(3) -822(2) -809(1) -775(0) -688(FS1) -687(FS2)

TARGET MASS:	50	69	131	219	414	502	1050
Amu Offset		117.8	117.8	117.8	117.8	117.8	117.8
Entrance Lens Offset		17.6	17.6	17.6	17.6	17.6	17.6