

HOUSTON POLICE DEPARTMENT
CRIME LABORATORY
Toxicology Section

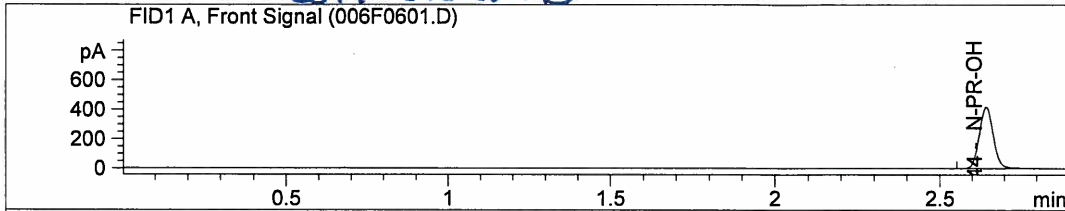
Reagent Preparation Worksheet
Volatiles Analysis

Reagent: 0.010% n-propanol Working Solution

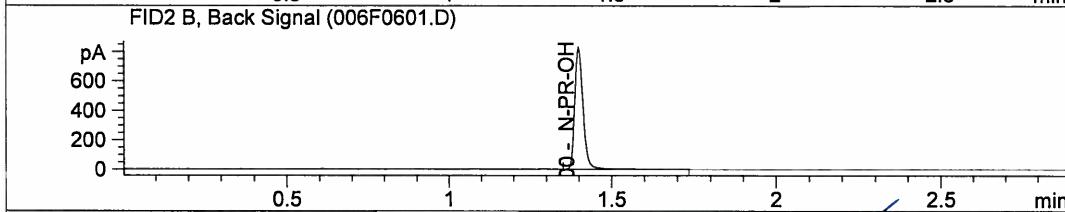
Preparation Notes: Add 10 ml 0.1% n-propanol stock solution to a 1 L volumetric flask and bring to volume with DI water.

Lab Lot #	Date Prepared	Preparer's Initials	Chemical 1		Chemical 2		Chemical 3		Volume		QC Check		Expiration	
			Manufacturer/Lot #	Manufacturer/Lot #	Manufacturer/Lot #	Manufacturer/Lot #	Made	Date	Date	Date				
02282013	2/28/13	MBM	1.0% N-Propanol stock solution HPD Lot# 11062012	Millipore Direct Q UN3 DS H2O	—	2.5 L	2/28/13	8/28/13						

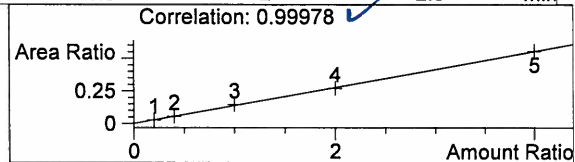
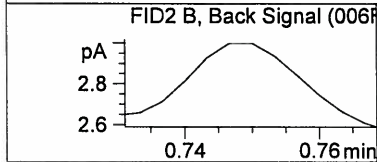
Lot# 02282013



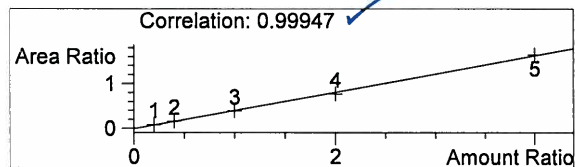
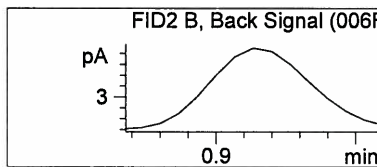
RTX-BAC2



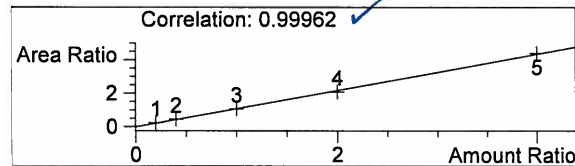
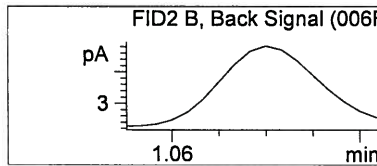
RTX-BAC1



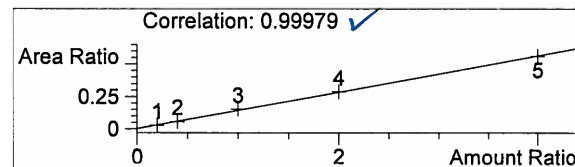
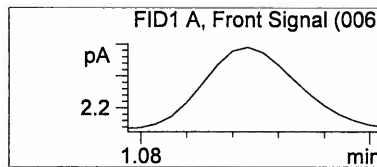
Compound	gm/dL	Meas. R	Exp. RT
ME-OH	0.0000	0.000	0.750



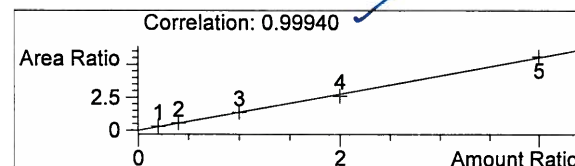
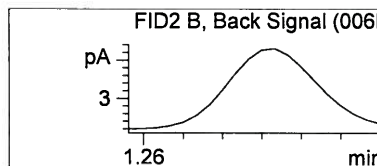
Compound	gm/dL	Meas. R	Exp. RT
ET-OH	0.0000	0.000	0.907



Compound	gm/dL	Meas. R	Exp. RT
Iso-PR-OH	0.0000	0.000	1.077

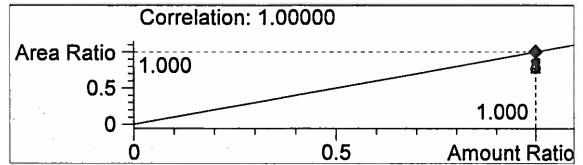
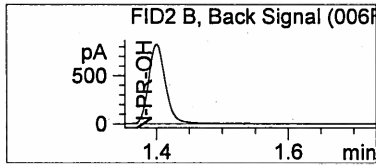


Compound	gm/dL	Meas. R	Exp. RT
ME-OH	0.0000	0.000	1.105

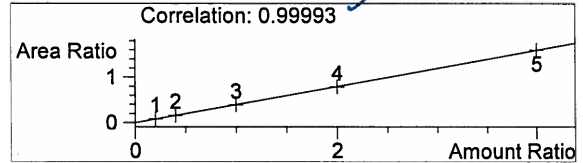
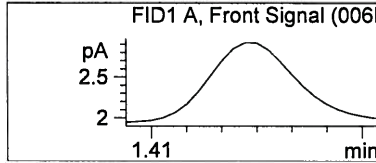


Handwritten signature

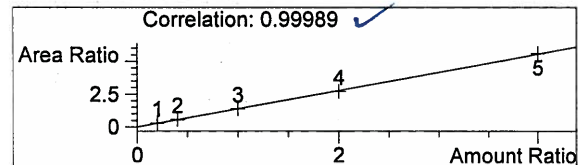
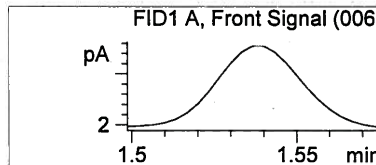
Compound	gm/dL	Meas. R	Exp. RT
Acetone	0.0000	0.000	1.288



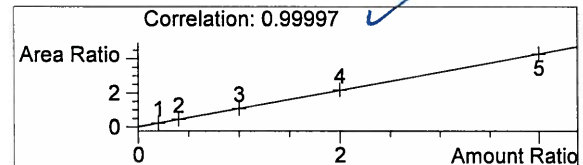
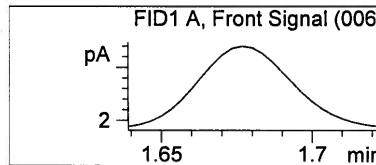
Compound	gm/dL	Meas. R	Exp. RT
N-PR-OH	0.1000	1.400	1.401



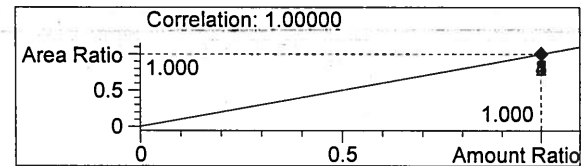
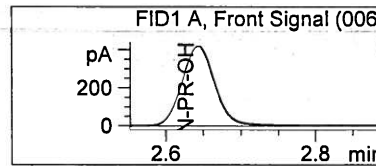
Compound	gm/dL	Meas. R	Exp. RT
ET-OH	0.0000	0.000	1.439



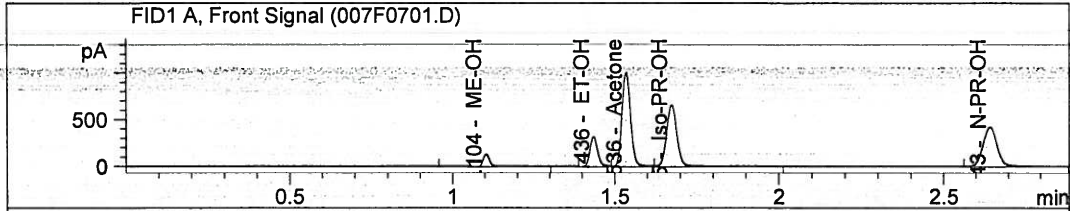
Compound	gm/dL	Meas. R	Exp. RT
Acetone	0.0000	0.000	1.537



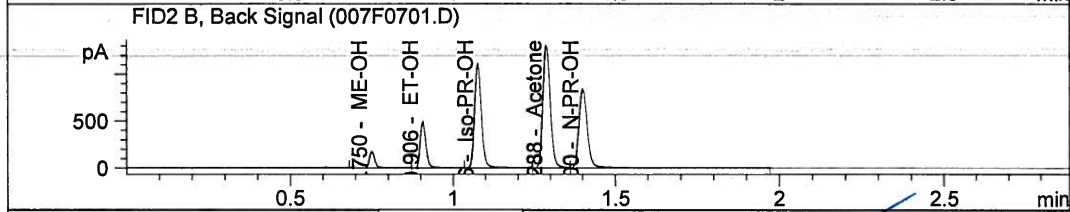
Compound	gm/dL	Meas. R	Exp. RT
Iso-PR-OH	0.0000	0.000	1.681



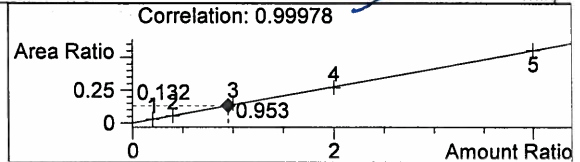
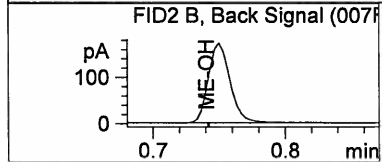
Compound	gm/dL	Meas. R	Exp. RT
N-PR-OH	0.1000	2.644	2.644



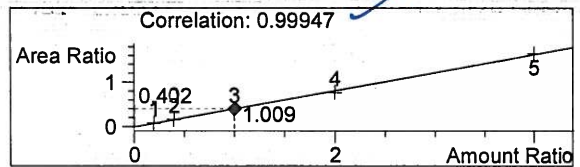
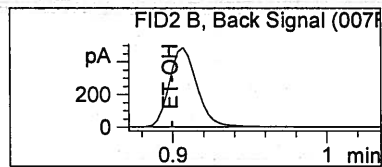
RTX-BAC2



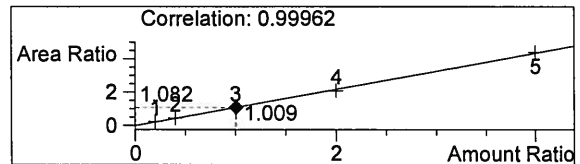
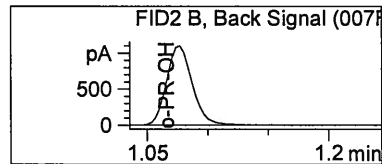
RTX-BAC1



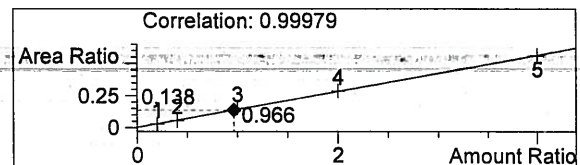
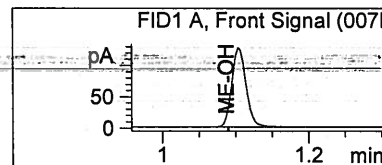
Compound	gm/dL	Meas. R	Exp. RT
ME-OH	0.0953	0.750	0.750



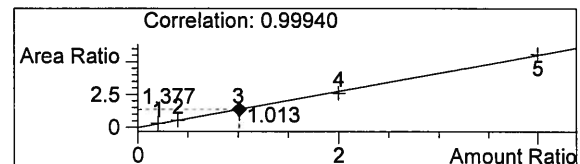
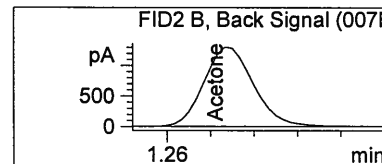
Compound	gm/dL	Meas. R	Exp. RT
ET-OH	0.1009	0.906	0.907



Compound	gm/dL	Meas. R	Exp. RT
Iso-PR-OH	0.1009	1.076	1.077

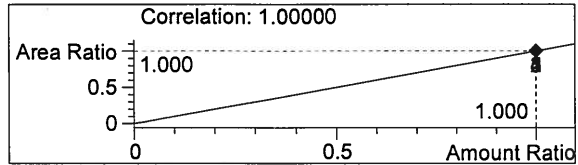
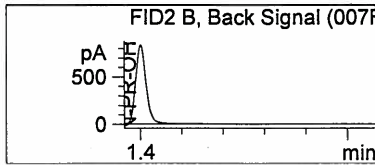


Compound	gm/dL	Meas. R	Exp. RT
ME-OH	0.0966	1.104	1.105

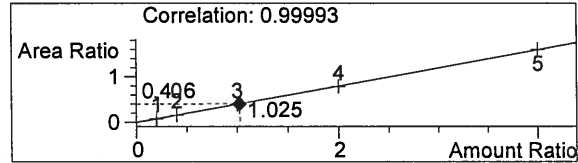
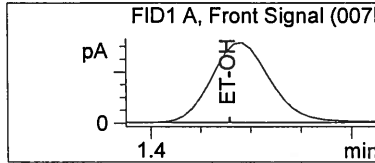


Handwritten signature

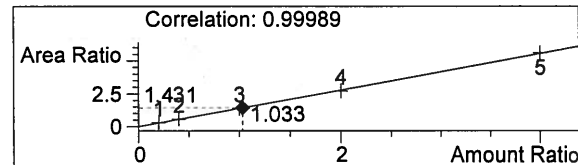
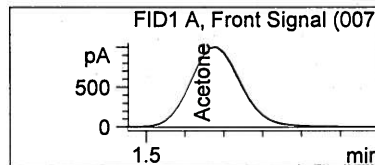
Compound	gm/dL	Meas. R	Exp. RT
Acetone	0.1013	1.288	1.288



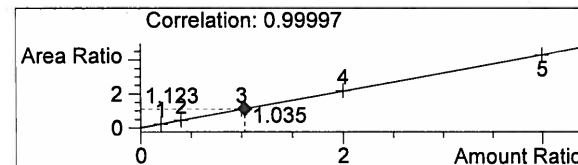
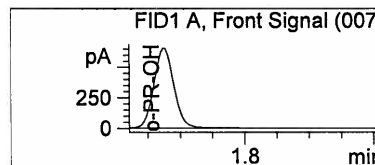
Compound	gm/dL	Meas. R	Exp. RT
N-PR-OH	0.1000	1.400	1.401



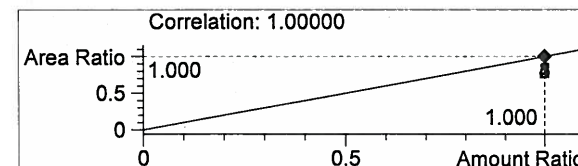
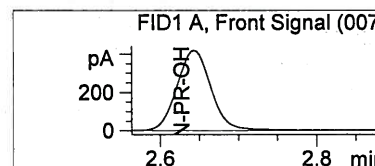
Compound	gm/dL	Meas. R	Exp. RT
ET-OH	0.1025	1.436	1.439



Compound	gm/dL	Meas. R	Exp. RT
Acetone	0.1033	1.536	1.537



Compound	gm/dL	Meas. R	Exp. RT
Iso-PR-OH	0.1035	1.675	1.681



Compound	gm/dL	Meas. R	Exp. RT
N-PR-OH	0.1000	2.643	2.644

ms

HOUSTON POLICE DEPARTMENT

CRIME LABORATORY

Toxicology Section ASCLD-International Program Certificate ALI-193T

Volatiles Batch QC Data

Batch Date: 2/28/13 A

Examiner: MBMellon

Internal QC

Quantitative QC

Aqueous Control

Ethanol

0.079

Blood Control

Ethanol

0.081

Qualitative QC

Mixed Volatiles

Negative

External QC

Quantitative QC

Aqueous Control

Ethanol

0.080

Blood Control

Ethanol

0.077

Manufacturer Range: 0.0614-0.0920

Methanol

0.031

Manufacturer Range: 0.0245-0.0421

Acetone

0.039

Manufacturer Range: 0.0257-0.0557

Isopropanol

0.037

Manufacturer Range: 0.0294-0.0440

* All values are g/100ml

Technical Review:

Mare

Date:

3-1-13

LAB-63

Version 03

Issue Date: 11-14-2012

Uncertainty budget: Expanded Uncertainty for Ethanol at 0.1 g/100mL at 99% is 5.0%

Batch run to
verify new
Internal Standard
lot 02282013