

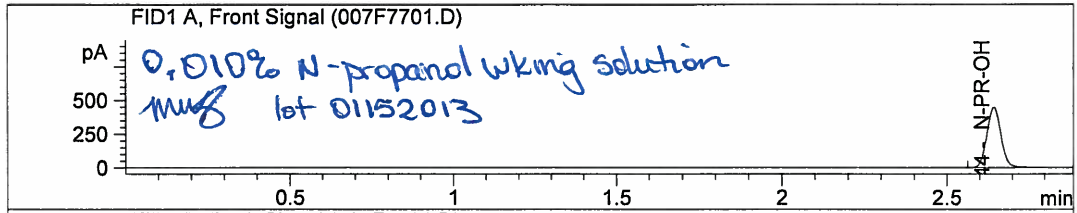


**Reagent Preparation Worksheet**  
**Volatiles Analysis**

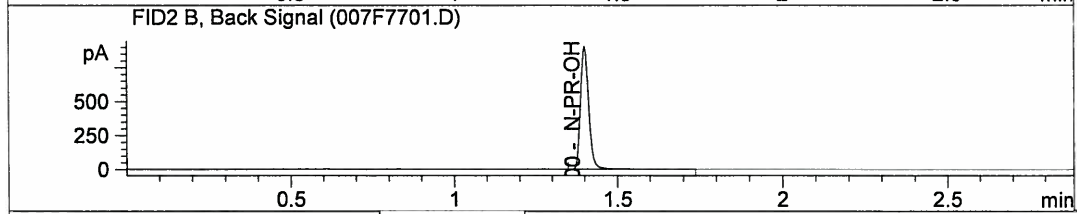
Reagent: 0.010% n-propanol Working Solution

Preparation Notes: Add 10 ml 0.1% n-propanol stock solution to a 1 L volumetric flask and bring to volume with DI water.

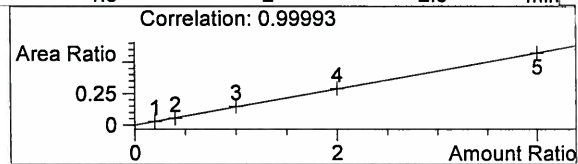
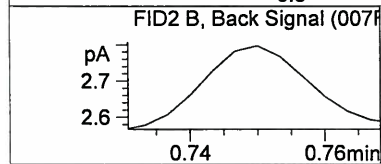
Lab Lot #	Date Prepared	Preparer's Initials	Chemical 1	Chemical 2	Chemical 3	Volume	QC Check	Expiration
			Manufacturer/Lot #	Manufacturer/Lot #	Manufacturer/Lot #	Made	Date	Date
01152013	1/15/13	MBM	1.0% N-propanol stock solution HPD Lot# 11062012	Millipore Direct Q UV3 DI water	—	2 L	1/15/13	7/15/13



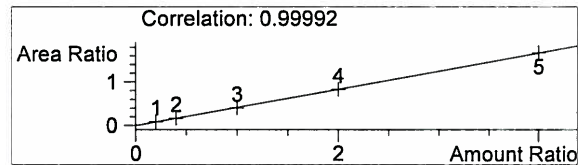
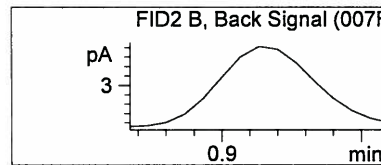
RTX-BAC2



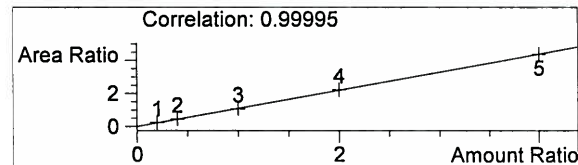
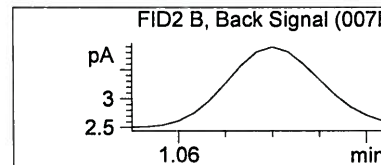
RTX-BAC1



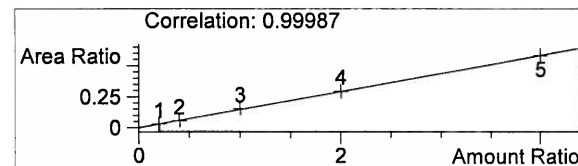
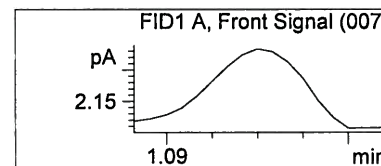
Compound	gm/dL	Meas. R	Exp. RT
ME-OH	0.0000	0.000	0.750



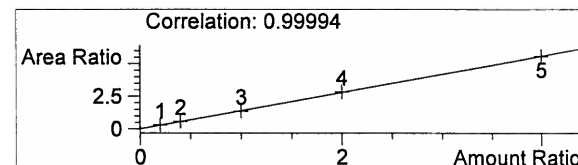
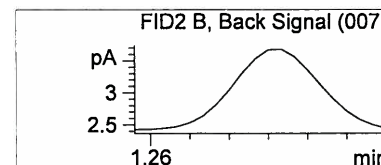
Compound	gm/dL	Meas. R	Exp. RT
ET-OH	0.0000	0.000	0.906



Compound	gm/dL	Meas. R	Exp. RT
Iso-PR-OH	0.0000	0.000	1.077

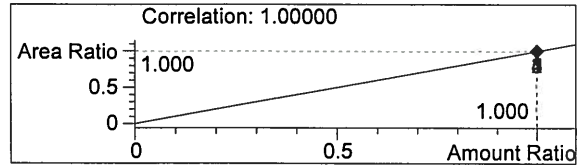
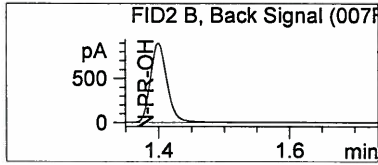


Compound	gm/dL	Meas. R	Exp. RT
ME-OH	0.0000	0.000	1.111

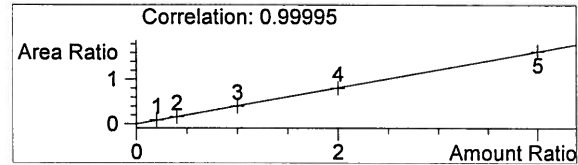
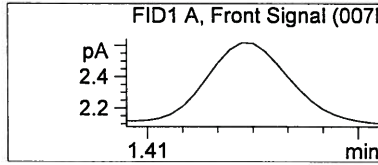


*MMS*

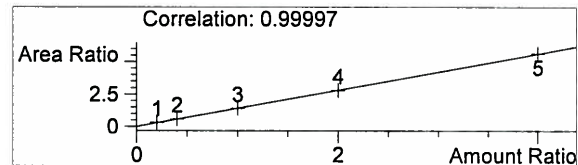
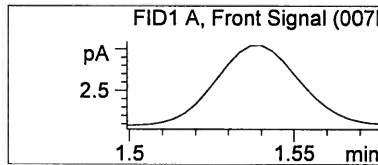
Compound	gm/dL	Meas. R	Exp. RT
Acetone	0.0000	0.000	1.288



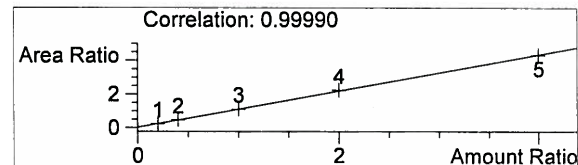
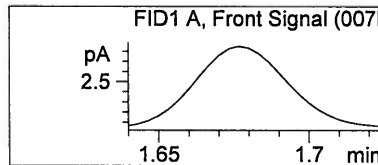
Compound	gm/dL	Meas. R	Exp. RT
N-PR-OH	0.1000	1.400	1.400



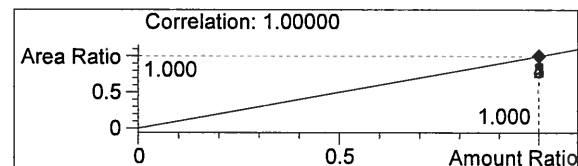
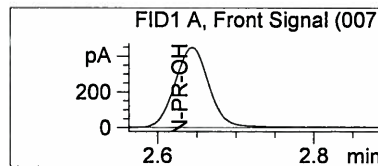
Compound	gm/dL	Meas. R	Exp. RT
ET-OH	0.0000	0.000	1.440



Compound	gm/dL	Meas. R	Exp. RT
Acetone	0.0000	0.000	1.538



Compound	gm/dL	Meas. R	Exp. RT
Iso-PR-OH	0.0000	0.000	1.682



Compound	gm/dL	Meas. R	Exp. RT
N-PR-OH	0.1000	2.644	2.645