

HOUSTON FORENSIC SCIENCE CENTER
FORENSIC ANALYSIS DIVISION

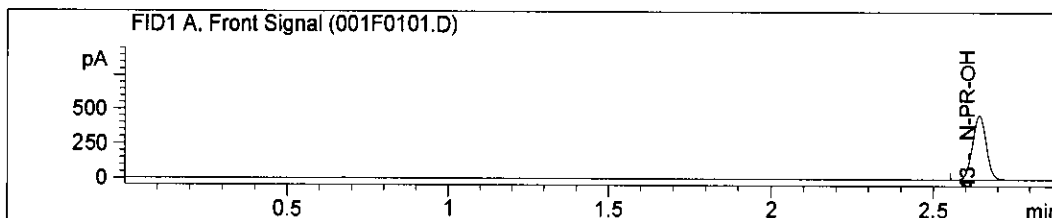
Reagent Preparation Worksheet
 Volatiles Analysis

Reagent: 0.010% n-propanol working solution.

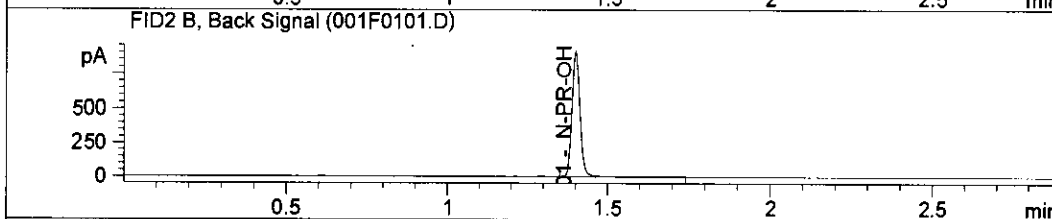
Preparation Notes: Make 1% n-propanol stock from 1g n-propanol, brought volume with DI H₂O in 100 mL Vol. flask. Make 0.010% working solution by addition of 10 mL n-propanol stock, brought to volume with DI H₂O in 1 L Vol. flask. Two 0.010% working solution of ~~1 L~~ 1 L each, are combined and mixed in a 2 L bottle.

Lab Lot #	Date Prepared	Preparer's Initials	Chemical 1		Chemical 2		Chemical 3		Volume Made	QC Check Date	Expiration Date
			Manufacturer/Lot #	Manufacturer/Lot #	Manufacturer/Lot #	Manufacturer/Lot #					
01052015-Stock	1.5.15	EL	N-propanol Alcohol 0.010% stock # 50255	DI water	NA	100 mL	Verified Sta. Dilution 1.22.15	7.5.15			
01052015-IP	1.5.15	EL	0.01% n-propanol Alcohol 01052015-stock	DI water	NA	2L	1.22.15	7.5.15			

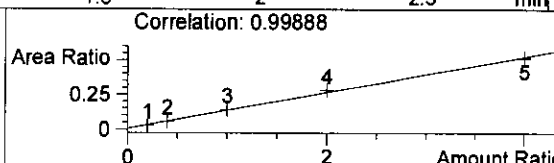
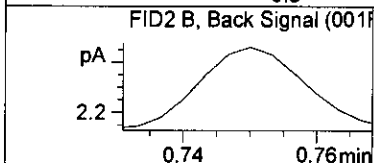
lot
09242014-T



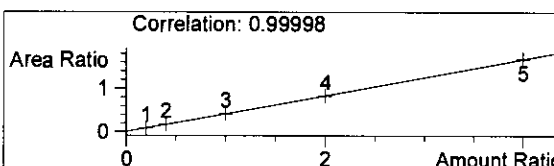
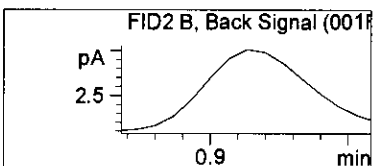
RTX-BAC2



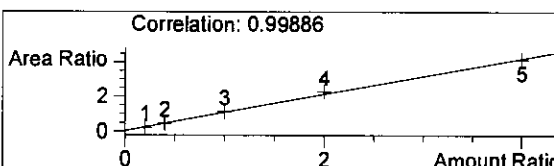
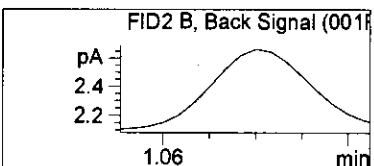
RTX-BAC1



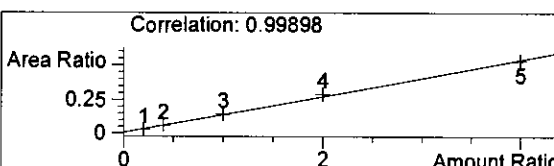
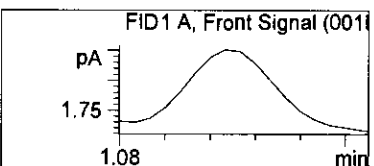
Compound	gm/dL	Meas. R	Exp. RT	Area
ME-OH	0.0000	0.000	0.750	0.000



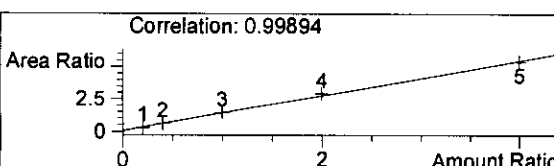
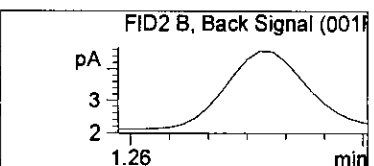
Compound	gm/dL	Meas. R	Exp. RT	Area
ET-OH	0.0000	0.000	0.907	0.000



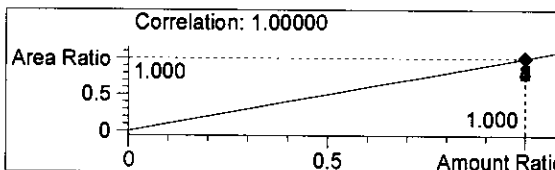
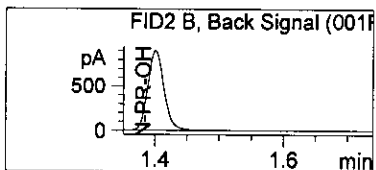
Compound	gm/dL	Meas. R	Exp. RT	Area
Iso-PR-OH	0.0000	0.000	1.078	0.000



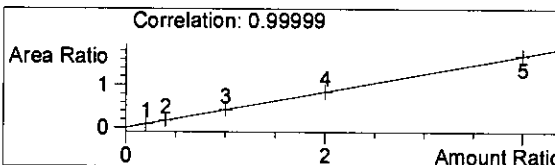
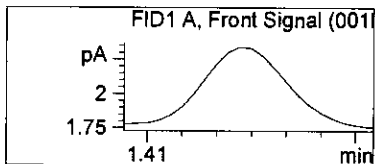
Compound	gm/dL	Meas. R	Exp. RT	Area
ME-OH	0.0000	0.000	1.108	0.000



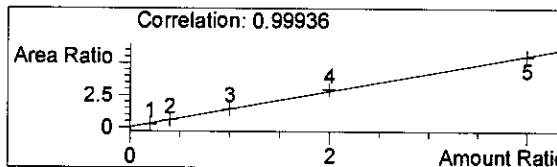
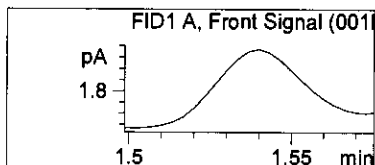
Compound	gm/dL	Meas. R	Exp. RT	Area
Acetone	0.0000	0.000	1.289	0.000



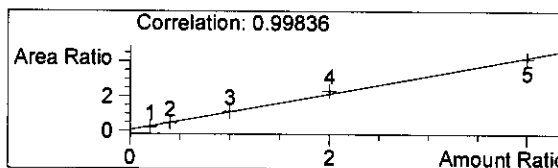
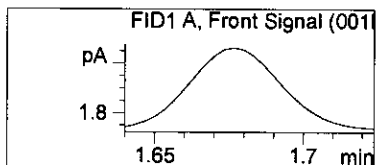
Compound	gm/dL	Meas. R	Exp. RT	Area
N-PR-OH	0.1000	1.401	1.401	1.590e3



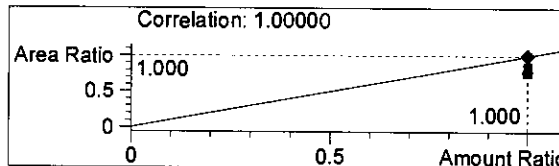
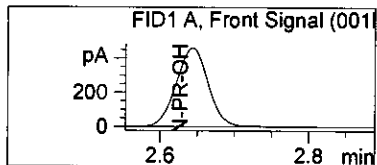
Compound	gm/dL	Meas. R	Exp. RT	Area
ET-OH	0.0000	0.000	1.439	0.000



Compound	gm/dL	Meas. R	Exp. RT	Area
Acetone	0.0000	0.000	1.537	0.000



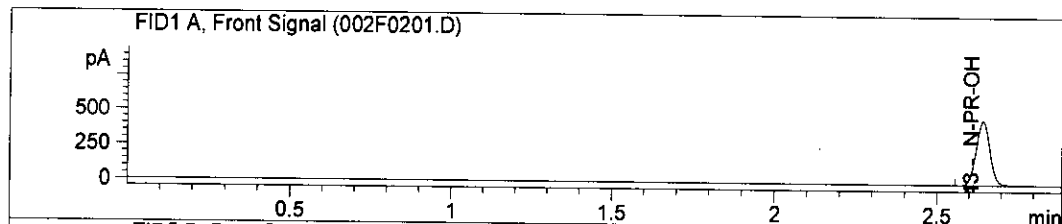
Compound	gm/dL	Meas. R	Exp. RT	Area
Iso-PR-OH	0.0000	0.000	1.682	0.000



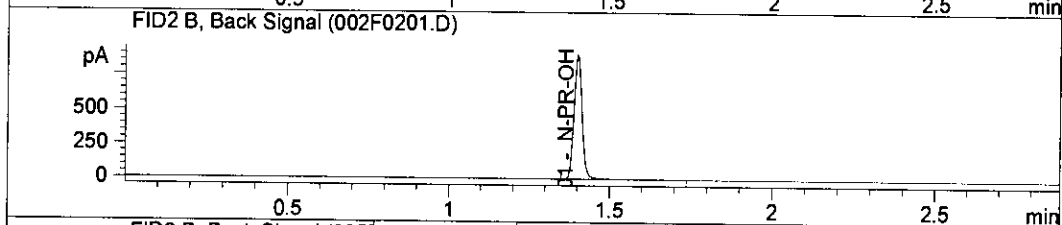
Compound	gm/dL	Meas. R	Exp. RT	Area
N-PR-OH	0.1000	2.643	2.645	1.379e3

62

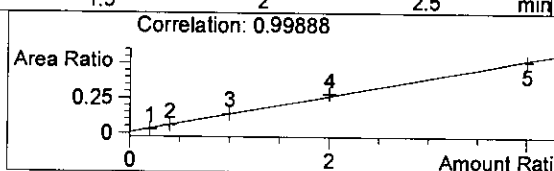
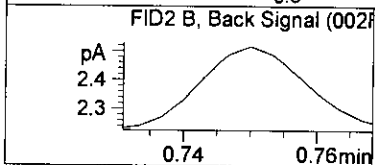
Lot #
01052015-IS



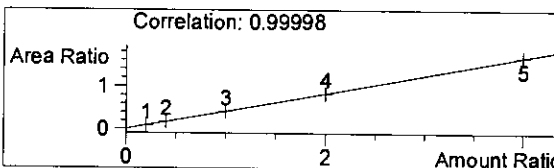
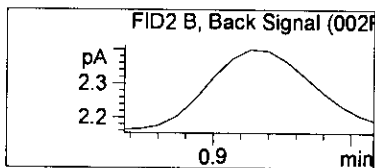
RTX-BAC2



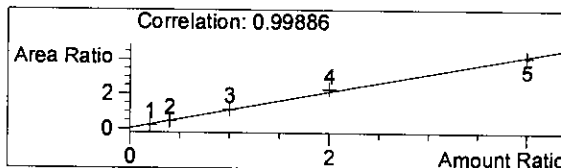
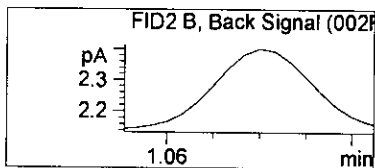
RTX-BAC1



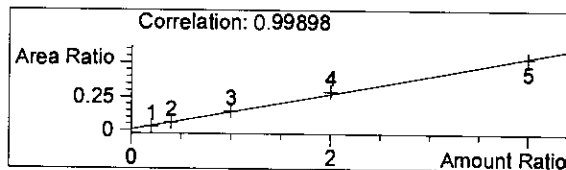
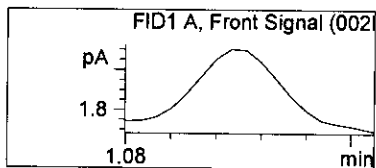
Compound	gm/dL	Meas. R	Exp. RT	Area
ME-OH	0.0000	0.000	0.750	0.000



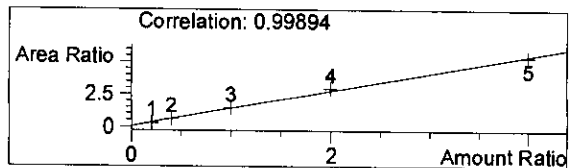
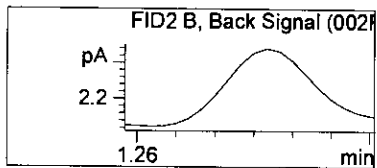
Compound	gm/dL	Meas. R	Exp. RT	Area
ET-OH	0.0000	0.000	0.907	0.000



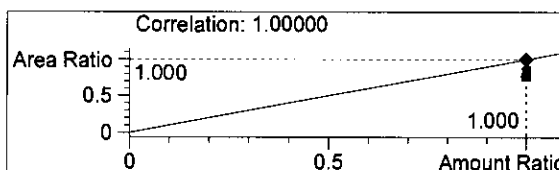
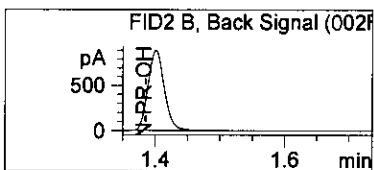
Compound	gm/dL	Meas. R	Exp. RT	Area
Iso-PR-OH	0.0000	0.000	1.078	0.000



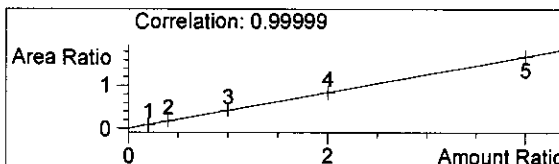
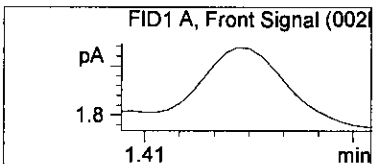
Compound	gm/dL	Meas. R	Exp. RT	Area
ME-OH	0.0000	0.000	1.108	0.000



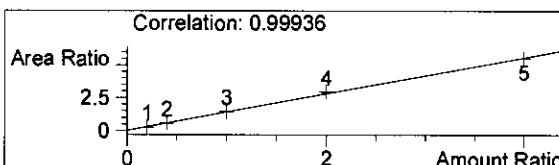
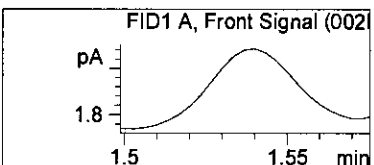
Compound	gm/dL	Meas. R	Exp. RT	Area
Acetone	0.0000	0.000	1.289	0.000



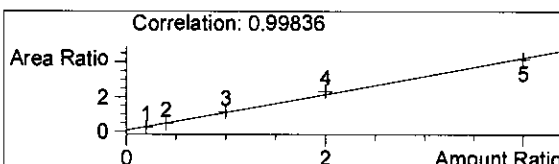
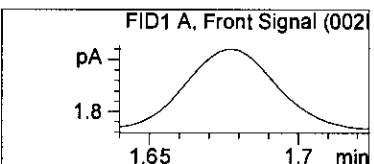
Compound	gm/dL	Meas. R	Exp. RT	Area
N-PR-OH	0.1000	1.401	1.401	1.580e3



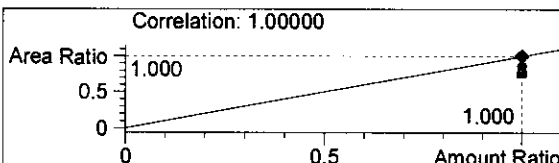
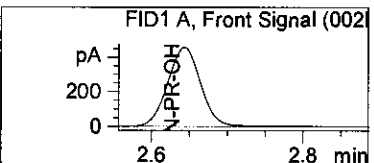
Compound	gm/dL	Meas. R	Exp. RT	Area
ET-OH	0.0000	0.000	1.439	0.000



Compound	gm/dL	Meas. R	Exp. RT	Area
Acetone	0.0000	0.000	1.537	0.000



Compound	gm/dL	Meas. R	Exp. RT	Area
Iso-PR-OH	0.0000	0.000	1.682	0.000



Compound	gm/dL	Meas. R	Exp. RT	Area
N-PR-OH	0.1000	2.643	2.645	1.369e3